

We reserve all rights in this document and in the information contained therein. Reproduction, use or modification without express PowerTech is strictly forbidden.

Inspection engineering review
Design engineering review
J MATJIPA

A

B

C

D

E

A

B


C

D

E

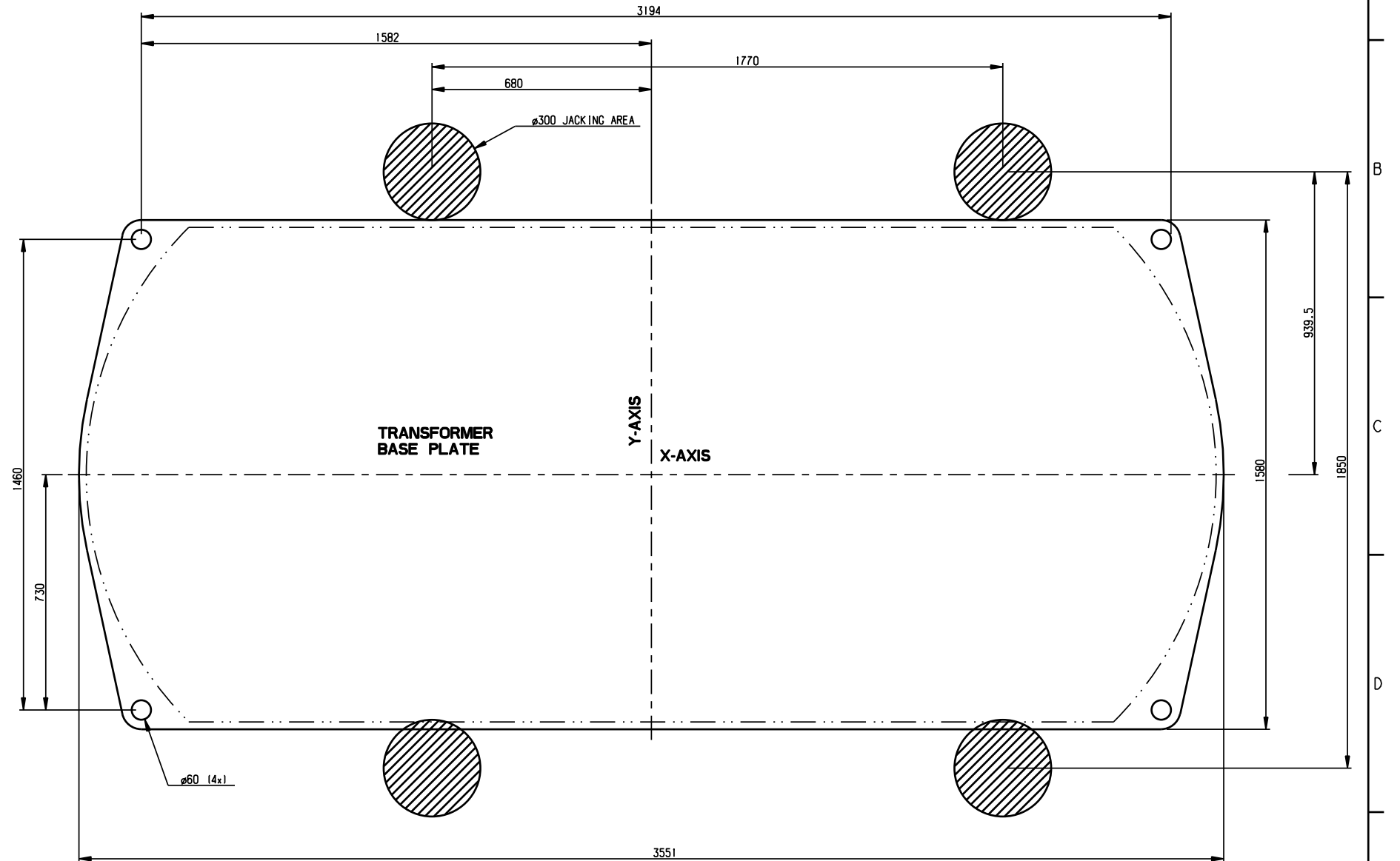
1	30	132	6.9	VMS III 400Y-72.5/B-14	YNd11
No	MVA	HV	MV	OLTC	PHASOR DIAG.
APPLICATION TABLE					


1	KOEBERG NUCLEAR POWER STATION		A2	240-68973110	1ZXX460010-DXA	W2161783	GSA 0-0 & FEMALE CONNEX	MCC
No	ESKOM PROJECT NAME	ESKOM DWG. NO.	ESKOM DWG. REV.	ESKOM SPEC. REV.	SSPM.	SERIAL NO.	HV	MV
PROJECT TABLE								

A2	BUSH-DUCT HEIGHT & LV CONNECTOR ADDED			C.L v ZYL	J MATJIPA	C.L v ZYL	2022	26	
A1	FIRST ISSUE FOR APPROVAL			S HILL	J MATJIPA	C.L van ZYL	2022	25	
REV	DESCRIPTION OF REVISION			DWN	CKD	APP	YEAR	WEEK	
 Eskom				ESKOM REF: 30MVA 132/6.9kV			DWG REV: A2		
				ISSUE DATE: 2022-25		↓ ESKOM DWG NO ↓		SHEET:	
				PREPARED BY: S Hill				1AA	
				CHECKED BY: J MATJIPA		CAD REF:		CONT:	
APPROVED BY: C.L van ZYL		FILE NAME:				-			
APP	TTM	C.L van ZYL		2022	25	TITLE: OUTLINE DRAWING		REV A2	
CHKD	TTM	J MATJIPA		2022	25			SH	
PREP	TTM	S Hill		2022	25			1	
FNCT	DEPT	NAME	SIGN	YEAR	WK	↓ SSPM DWG NO ↓		CNT	
SGB-SMIT POWER MATLA						1ZXX460010-DXA		4	

MASS TABLE	kg	Litre
CORE AND WINDINGS	29 000	
TANK , COVER , FITTINGS	16 775	
TRANSFORMER COMPLETE WITHOUT OIL	45 775	
TOTAL OIL QUANTITY	12 060	13 705
TRANSFORMER COMPLETE WITH OIL	57 840	
TRANSPORT MASS WITHOUT OIL	41 525	
TRANSPORT MASS WITH OIL	51 650	

146	TAP CHANGER NITROGEN INJECTION POINT	25 NOM
145	FLOW INDICATORS	
144	COOLERS	ALFA-1-5010-01-3-1-2. 550 RPM
143	VALVES FOR MONITORING	25 NOM
142	NITROGEN INJECTION POINT	25 NOM
141	SERGI CONNECTION POINT ON MAIN TANK	
140	CONTROL JUNCTION BOX	
139	PT 100 THERMOMETER	
138	COR CABLE BOXES	
137	OIL LEVEL INDICATOR CABLE BOX CONSERVATOR	
136	DRAIN VALVE CABLE BOX CONSERVATOR	25 NOM
135	CONSERVATOR FOR CABLE BOXES	
134	BREATHER CABLE BOX CONSERVATOR	
133	OIL CIRCULATION PUMP	VMDA-100-160-C-A-A-2-C5
132	HV BUSHING CABLE SIDE	TYCO 145 kV DRY TYPE TERMINATION
131	PERMANENT LADDER	
130	SAMPLE VALVE - MAIN TANK	1/4" BSP
128	SAMPLE VALVE - TAPCHANGER DIVERTER	1/4" BSP
124	TRANSFORMER ROUTINE SAMPLE POINT	1/4" BSP
119	AIR RELEASE VALVE - MAIN CONSERVATOR	25 NOM
108	FILTER VALVE - MAIN TANK	50 NOM
105	DRAIN VALVE - HEADER PIPE	25 NOM
88	DRAIN / FILTER VALVE - TAPCHANGER DIVERTER	25 NOM
87	DRAIN / FILTER VALVE - MAIN TANK	50 NOM
85	DRAIN / FILTER VALVE - TAPCHANGER CONSERVATOR	25 NOM
84	DRAIN / FILTER VALVE - MAIN CONSERVATOR	50 NOM
82	ISOLATING VALVE - CONSERVATOR	
72	ISOLATING VALVE - ALPHA COOLER (TOP & BOTTOM)	
70	ISOLATING VALVE - TAPCHANGER CONSERVATOR	25 NOM
69	ISOLATING VALVE - MAIN CONSERVATOR	80 NOM
67	THERMOMETER POCKET FOR CHECKING TOP AND BOTTOM HEADER PIPE	
66	CURRENT TRANSFORMER TERMINAL BOX	
58	HV NEUTRAL BUSHING TERMINAL	
57	DETACHABLE RADIATORS WITH DRAIN AND AIR RELEASE PLUGS	
56	INSPECTION COVERS	
53	LIFTING LUG FOR LIFTING CONSERVATOR ONLY	
52	LIFTING LUG FOR LIFTING COVER ONLY	
51	LIFTING BEAM FOR LIFTING COMPLETE TRANSFORMER	
46	PCB - INFO PLATE	
45	OIL INFORMATION PLATE	
44	VALVE LOCATION PLATE	
43	RATING AND DIAGRAM PLATE	
42	SSPM NAME PLATE	
41	EARTHING TERMINALS	
37	MAIN TANK PRESSURE RELIEF DEVICE	
36	MARSHALLING KIOSK	
35	JACKING PAD	
34	TAPCHANGER CONSERVATOR DE - HYDRATING BREATHER	
33	MAIN CONSERVATOR DE - HYDRATING BREATHER	
30	POCKET FOR CHECKING THERMOMETER	
29	POCKET FOR OIL THERMOMETER	
28	POCKET FOR WINDING THERMOMETER	KILSTROM 14CI 12m
27	THERMOMETER FOR OIL TEMPERATURE	MESSKO EPT 202 DIGITAL
26	THERMOMETER FOR WINDING TEMPERATURE	
24	PRESSURE RELAY FOR TAPCHANGER	
23	DRIVE MECHANISM FOR TAPCHANGER	
22	ON LOAD TAPCHANGER	VM III 350Y-72.5/B 14 13 0
19	CAS OPERATED RELAY	
18	CORE EARTHING BUSHING	
11	LV BUSHING	MCC-DTOI 36/3150/0.3
8	HV NEUTRAL BUSHING	MCC-DTOI 52/1000/0.3
5	HV BUSHING OIL SIDE	CSA-00 145/1250/0.3
4	OIL LEVEL INDICATOR TAPCHANGER CONSERVATOR	
3	OIL LEVEL INDICATOR MAIN CONSERVATOR	
2	TAPCHANGER CONSERVATOR WITH REMOVABLE END AND OIL FILLING HOLE	
1	MAIN CONSERVATOR WITH REMOVABLE END	
ITEM	DESCRIPTION	

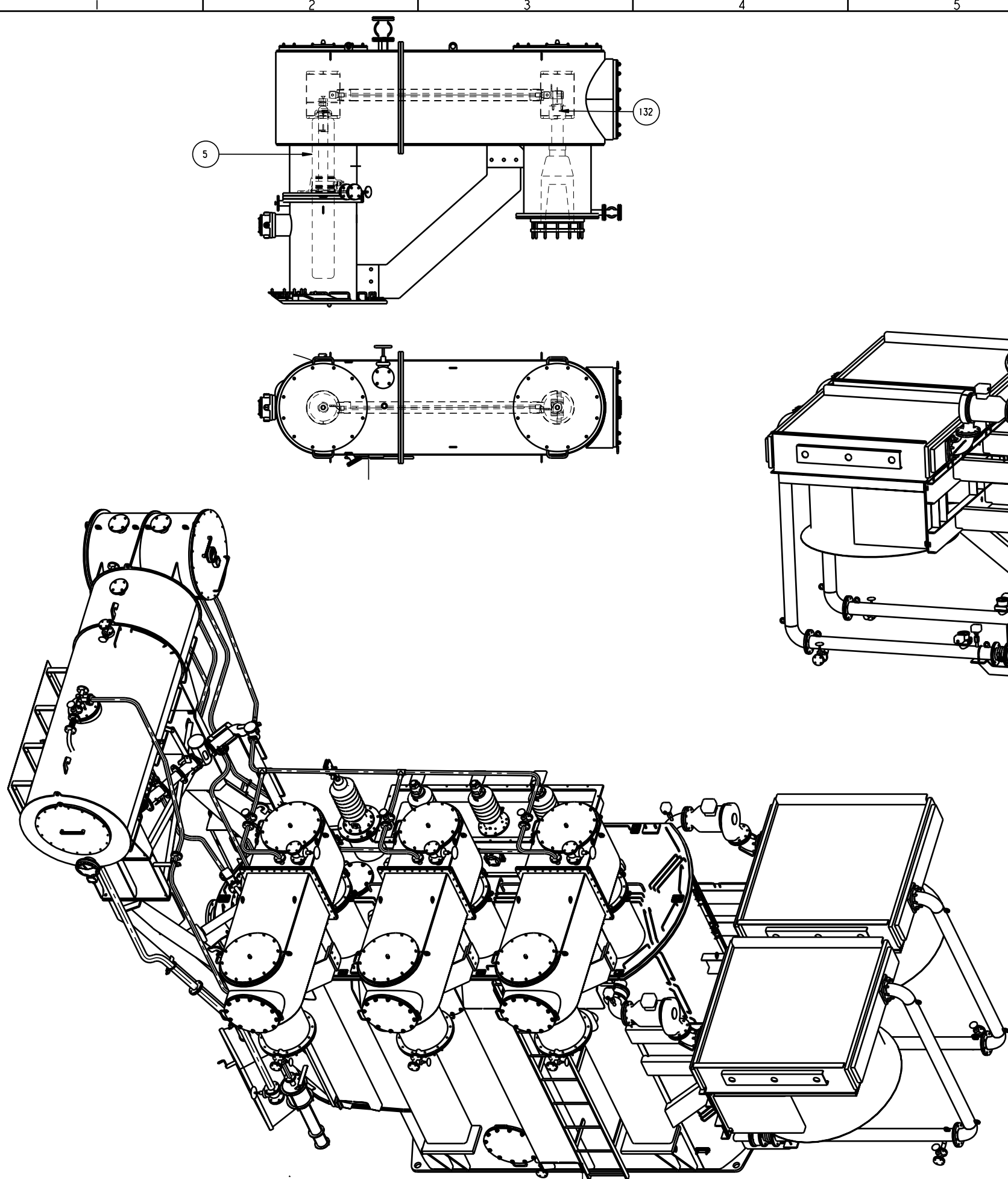


									E
A2	DIM FOR BUSH-DUCT & LV CONNECTOR ADDED	C.L.v ZYL	J MATJIPA	C.L v ZYL	2022	26			
A1	FIRST ISSUE FOR APPROVAL	S Hill	J MATJIPA	C.L van ZYL	2022	25			
REV	DESCRIPTION OF REVISION	DWN	CKD	APP	YEAR	WEEK			
 Eskom		ESKOM REF: 30MVA 132/6.9kV				DWC REV:	A2		
		ISSUE DATE: 2022-25		↓ ESKOM DWC NO ↓		SHEET:			
		PREPARED BY: S Hill				IAA			
		CHECKED BY: J MATJIPA		CAD REF:		CONT:			
		APPROVED BY: C.L van ZYL		FILE NAME:		-			
APP	TTM	C.L van ZYL		2022	25	TITLE: OUTLINE DRAWING			REV
CHKD	TTM	J MATJIPA		2022	25				A2
PREP	TTM	S Hill		2022	25				SH
FUNCT	DEPT	NAME	SIGN	YEAR	WK				3
						↓ SSPM DWG NO ↓			CNT
SGB-SMIT POWER MATLA						I2XX460010-DXA			4

ESKOM REF: 30MVA 132/6.9kV
ISSUE DATE: 2022-25
PREPARED BY: S HILL
CHECKED BY: J MATJIPA
APPROVED BY: C.L. van ZYL

PRODUCTION ENGINEERING REVIEW
J MATJIPA

FORM T170 (A1)



A2		BUSH-DUCT HEIGHT & LV CONNECTOR ADDED	C.L. v ZYL	J MATJIPA	C.L. v ZYL	2022	26
A1		FIRST ISSUE FOR APPROVAL	S Hill	J MATJIPA	C.L. van ZYL	2022	25
REV	DESCRIPTION OF REVISION			DWN	CKD	APP	YEAR WEEK
		ESKOM REF: 30MVA 132/6.9kV					DWC REV: A2
		ISSUE DATE: 2022-25		↓ ESKOM DWG NO ↓		SHEET: IAA	
		PREPARED BY: S Hill		CAD REF:		CONT: -	
		CHECKED BY: J MATJIPA		FILE NAME:			
APP	TTM	C.L. van ZYL	2022	25	TITLE: OUTLINE DRAWING		REV A2
CHKD	TTM	J MATJIPA	2022	25			SH
PREP	TTM	S HILL	2022	25			4
FNCT	DEPT	NAME	SIGN	YEAR WK			CNT 4
SGS-SMIT POWER MATLA						IZXX460010-DXA	